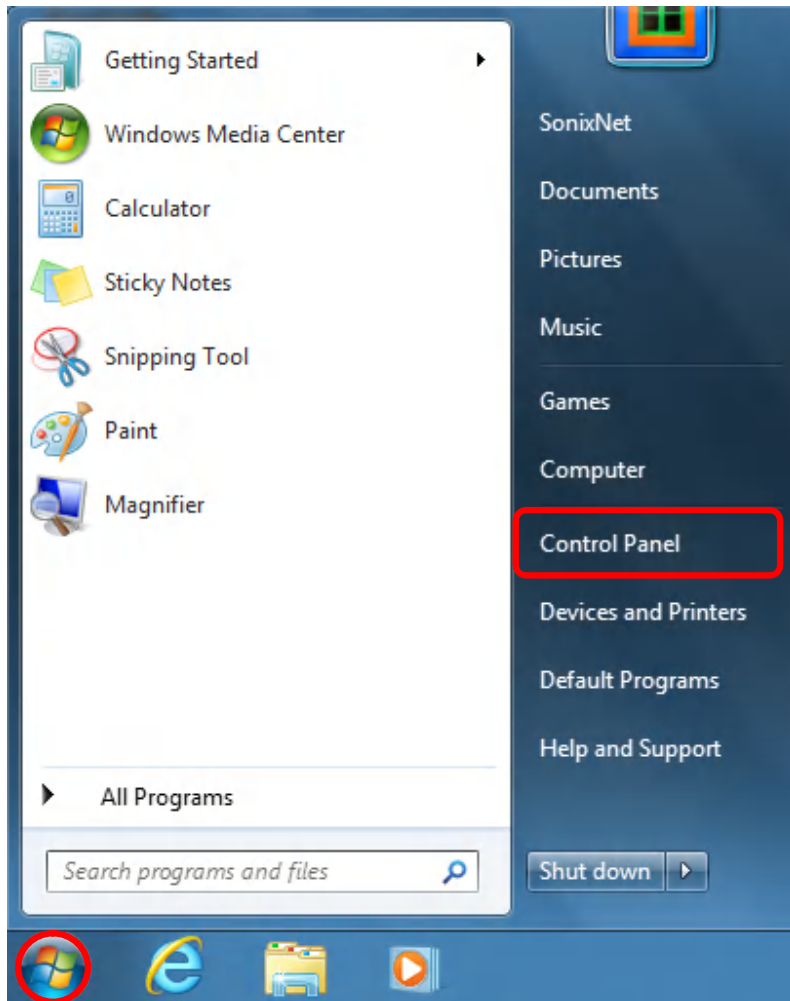


## Sonixnet

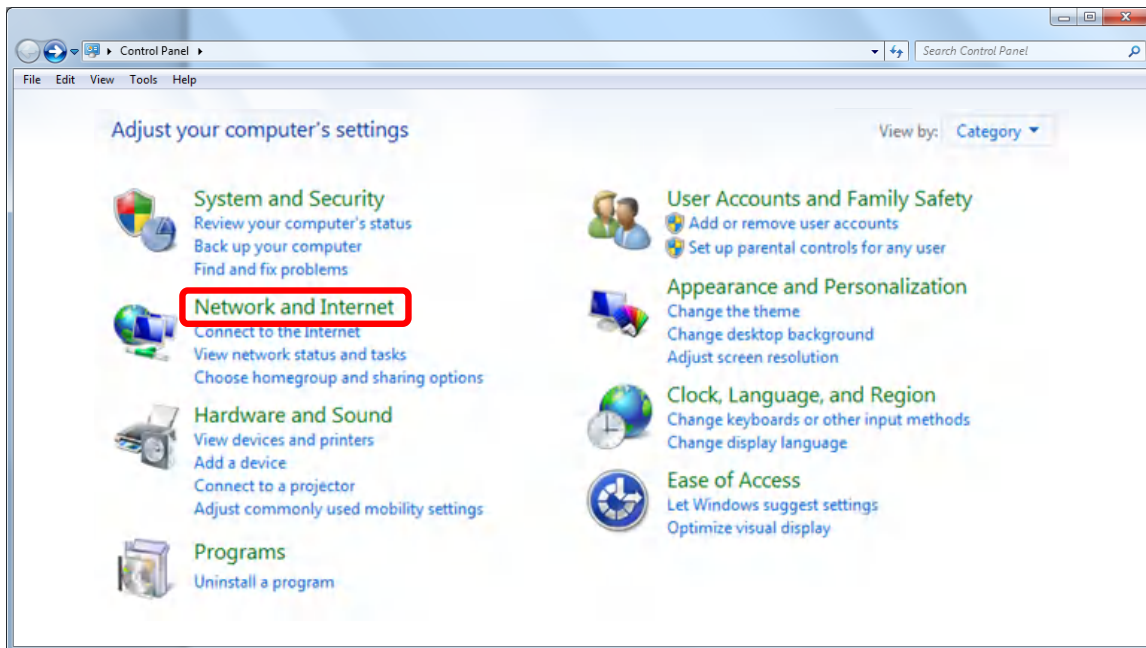
### (Windows 7) Internet connection setting for single computer

#### Step 1. Creating a New Connection

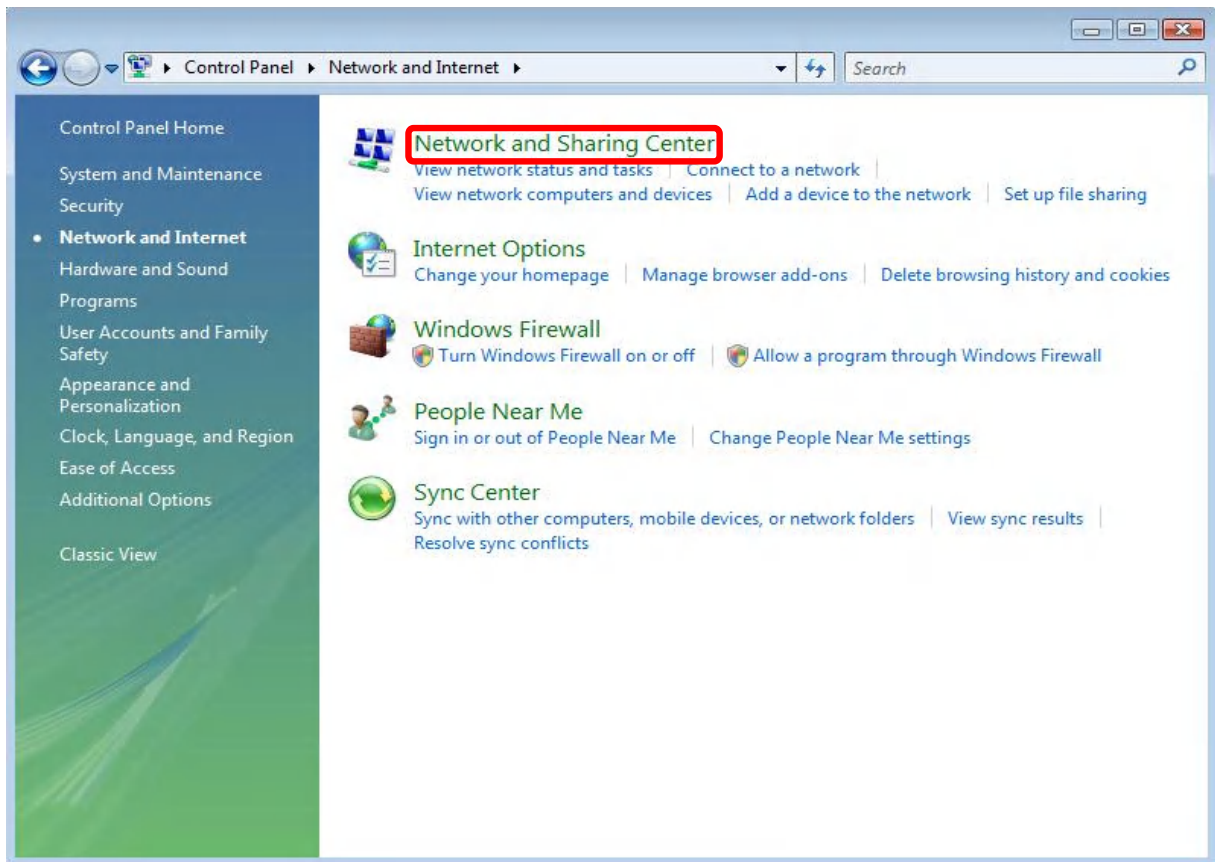
1. Click **Start menu** -> **Control Panel** from the Start Menu



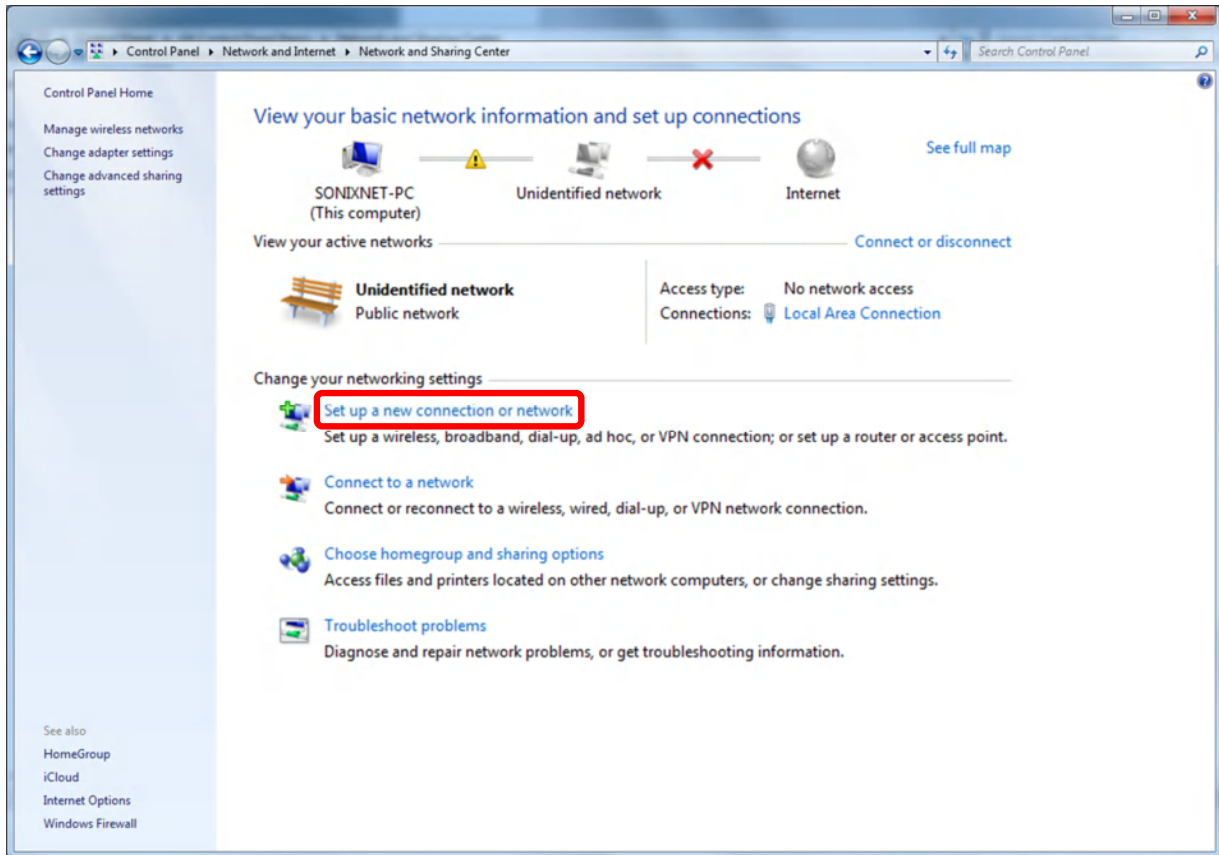
## 2. Click **Network and Internet**.



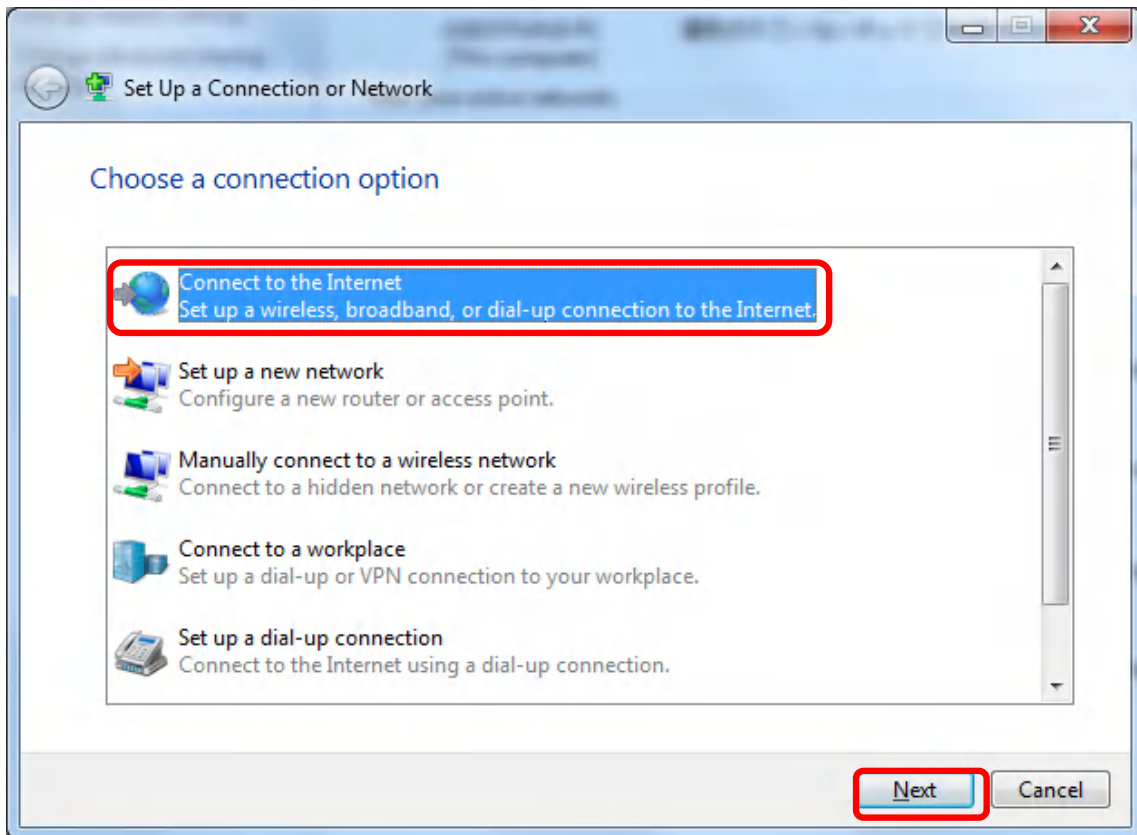
### 3. Click **Network and Sharing Center**.



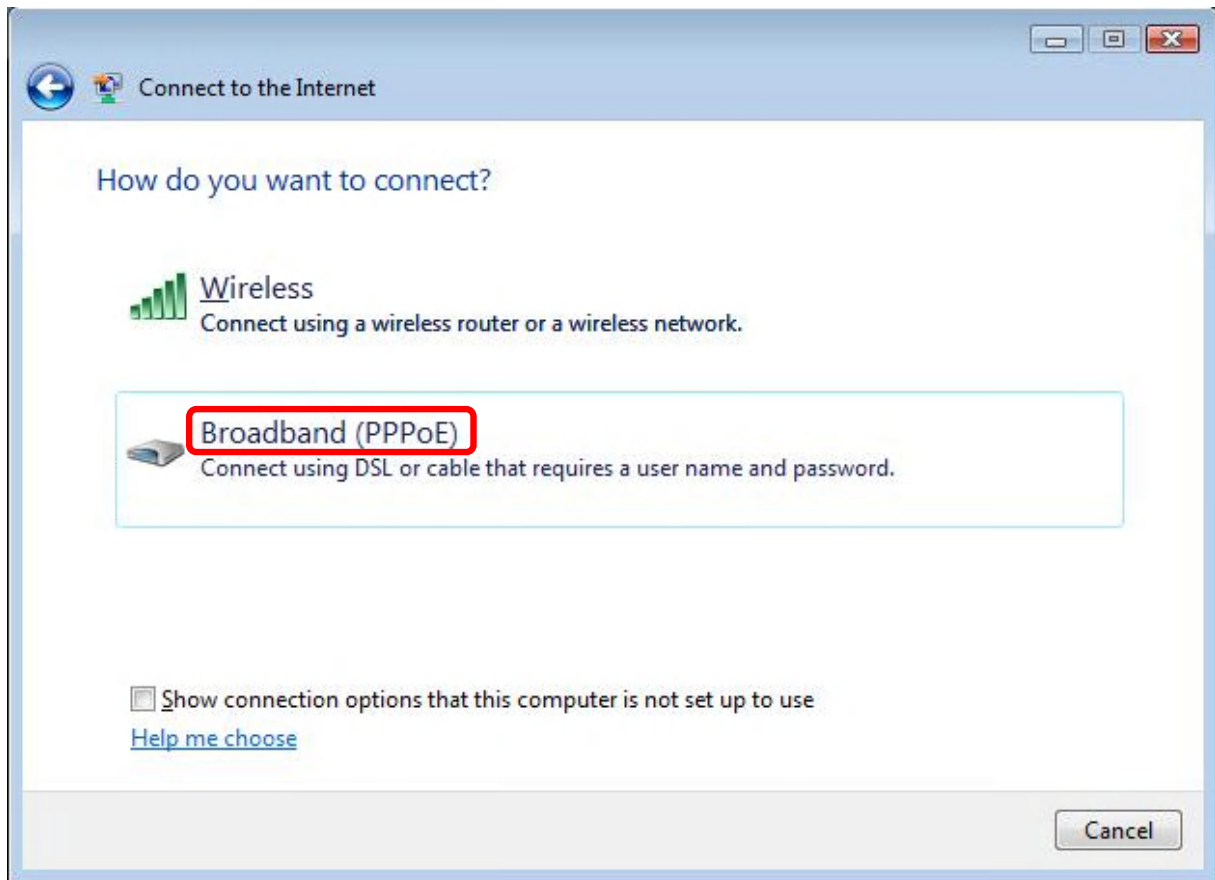
4. Click **Setup a new connection or network** from the left task bar.



5. Click **Connect to the Internet** and click **Next**.



6. Click **Broadband (PPPoE)**.



7. **Fill in the below fields** following the instructions below and click **Connect** when finished.

1. Input Username : Please type in the PPPoE ID we provided via E-mail.
2. Input Password : Your SonixNet password (Please check on Remember this password for Windows to remember the password)
3. Connection name: You can type any name you like. (ex. SonixNet)
4. After you have typed in the above click on Connect.

Connect to the Internet

Type the information from your Internet service provider (ISP)

User name: tbd\*\*\*\*\*@ij.ad.jp

Password: ●●●●●●

Show characters

Remember this password

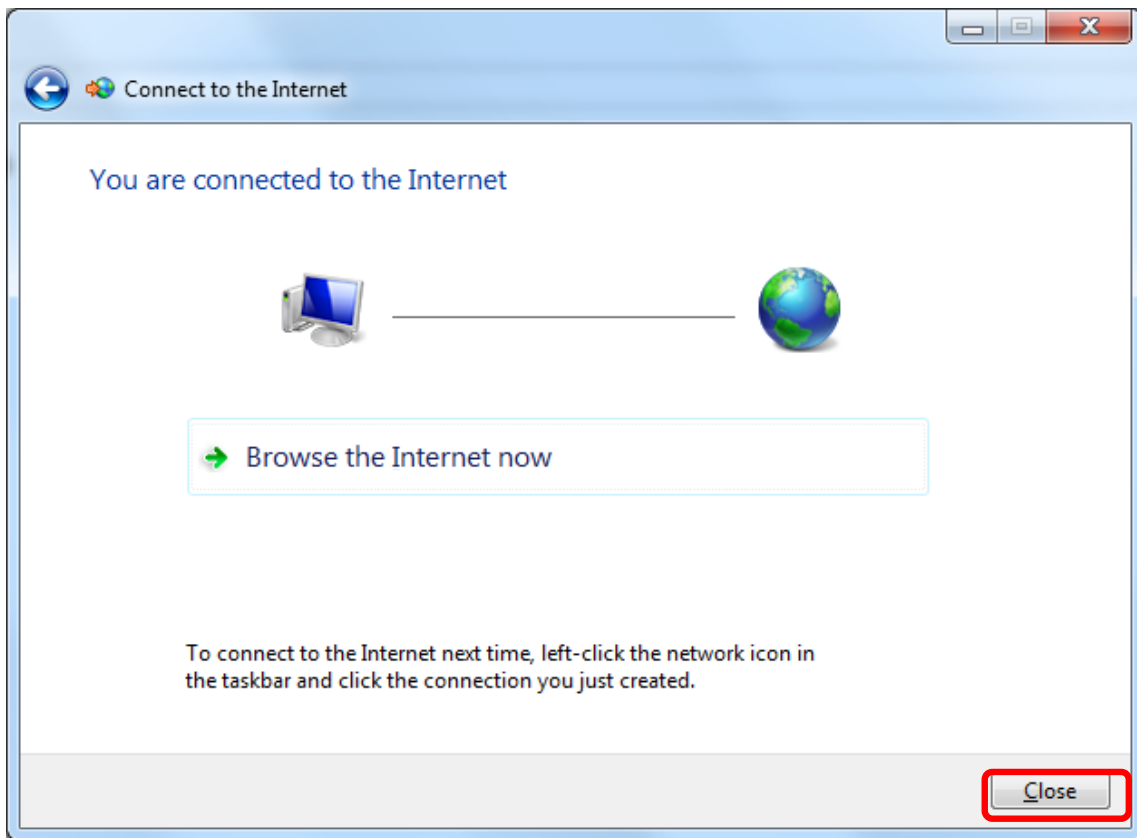
Connection name: SonixNet

Allow other people to use this connection  
This option allows anyone with access to this computer to use this connection.

[I don't have an ISP](#)

Connect Cancel

8. If you see the following window then you have successfully established a connection.



This concludes configuring a new connection.

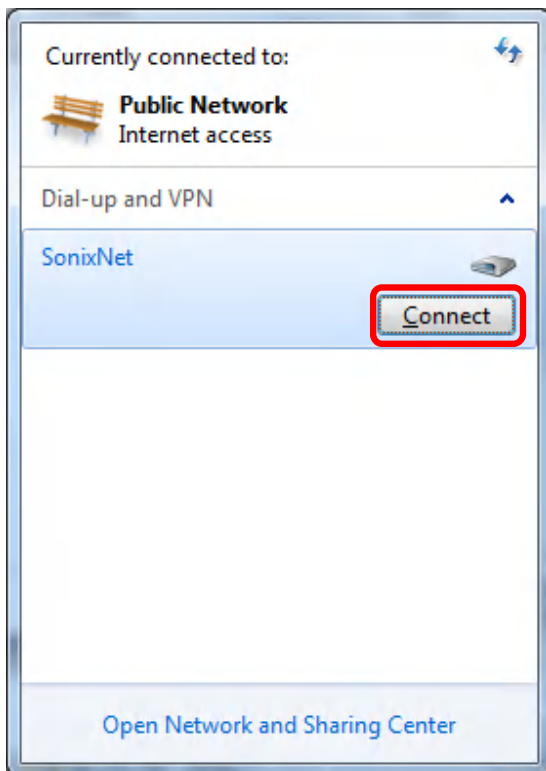


## Step 2. Connecting

1. Click on the indicator icon in the task tray.



2. Click on "Connect" in the "SonixNet".



Please continue on to [Step 3. Disconnecting](#) for instructions on how to disconnect.

### Step 3. Disconnecting

1. Click on the indicator icon in the task tray.



2. Click on "Disconnect" in the "SonixNet".

